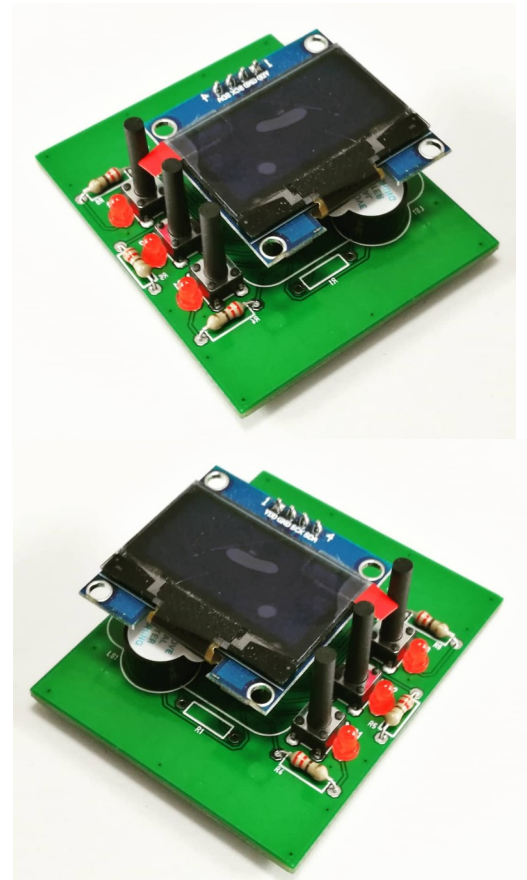


# OLED Display Shield



For din rail enclosure kits



## Features:

- 1.3 inch (3,3 cm) OLED display (SH1106 controller)
- Resolution 128x64 pixel
- Power supply 3,3V – 5V DC
- I2C communication only 4 wire needed (plus optional interrupt line)
- pcb fits perfectly in ArduiBox and RasPiBox DIN rail enclosure kits
- 3 push buttons for interaction with user
- 3 red LEDs
- Beeper
- Control of buttons, leds and beeper via MCP23008 I2C port expander (on board)
- Python code (for RPI) and C++ code (for Arduino) available
- Outside dimensions 61mm x 50mm x 22mm (W x H x T)

# OLED Display Shield

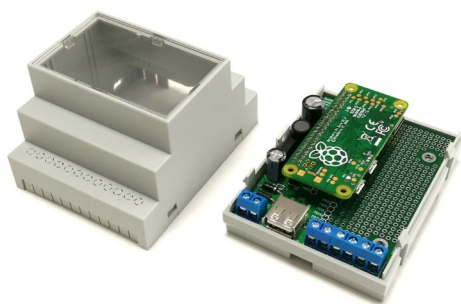


For din rail enclosure kits

## Supported Platforms:

- Arduino UNO, MEGA, NANO, Micro (ATMEGA based)
- Arduino MKR series
- Arduino Nano Every, 33 BLE, 33 IoT
- Raspberry Pi A, B(+), 2B(+), 3B(+), 4B
- Raspberry Pi Zero (W) (2 W)
- ESP8266
- ESP32
- RP2040 including Raspberry Pi Pico
- And other on your own risk

## Compatible 4 module enclosure kits:



**RasPiBox Zero V4.x**



**ArduiBox ESP**



**RasPiBox Pico**

## Compatible 6 module enclosure kits



**RasPiBox Open V2.x**



**ArduiBox Open V2.x**



**ArduiBox MKR V2.x**

# OLED Display Shield

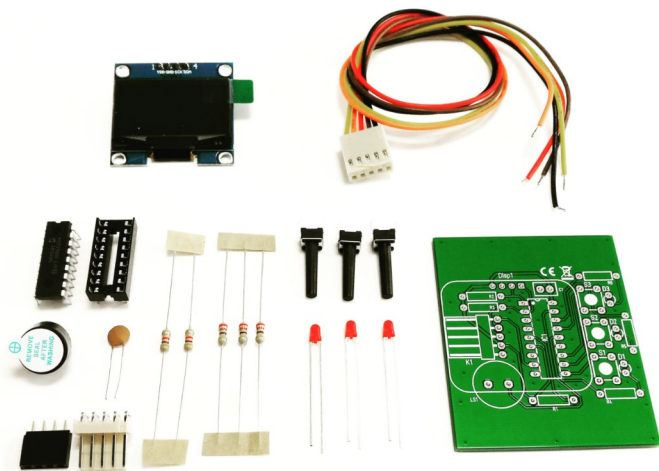


For din rail enclosure kits

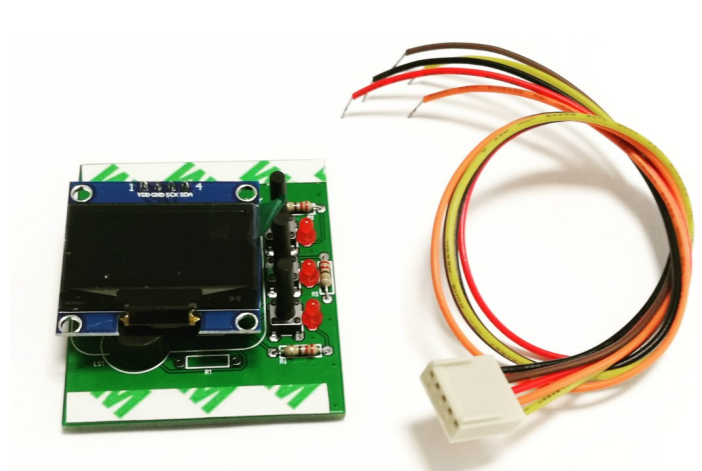
## Part number table:

Part-No.	EAN	Version
OLEDSDLDB	676424951558	DIY kit version
OLEDSLDA	705184883394	Assembled version

## Scope of delivery:



**OLEDSDLDB – diy kit version**



**OLEDSLDA – assembled version**

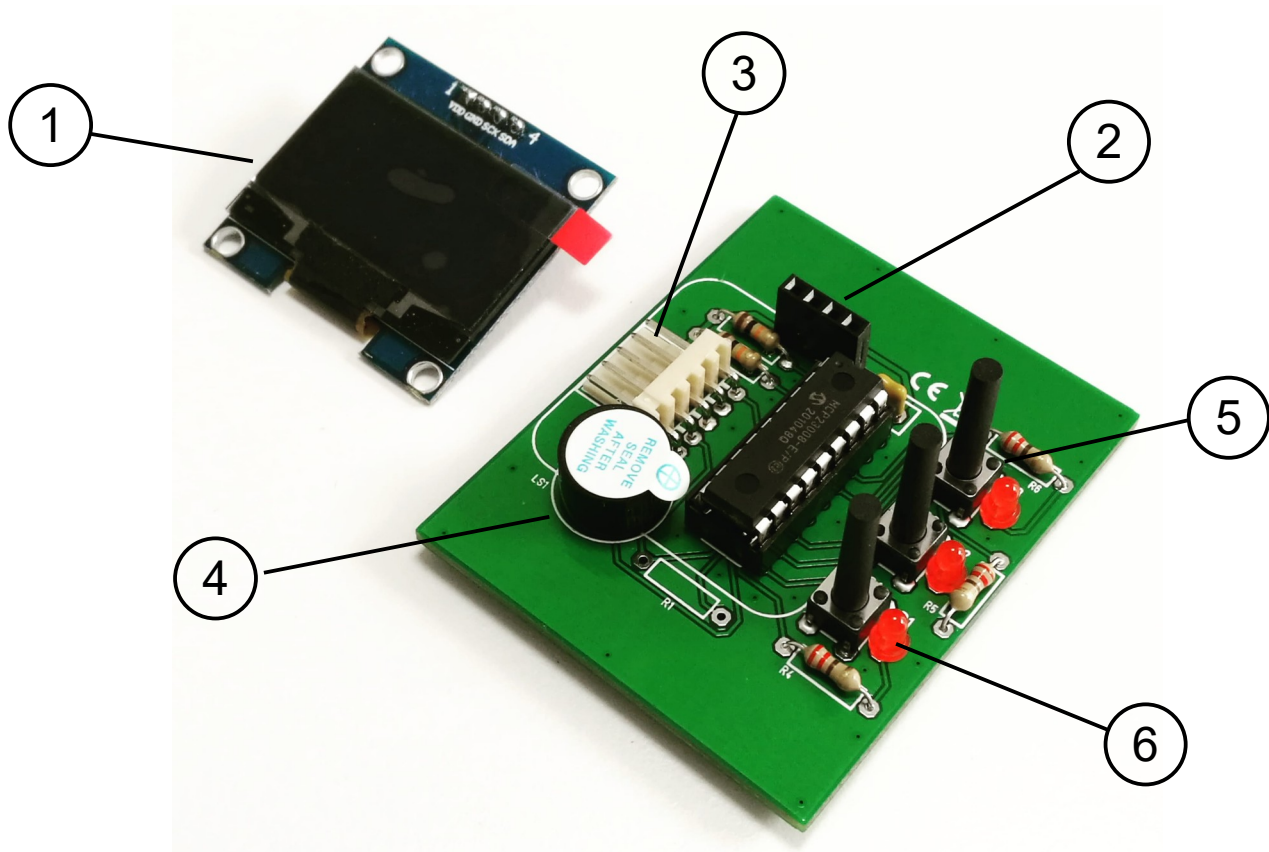
Please note: The package is delivered without a front plate. When ordering the housing, please select the version with **"lid for OLED"**.

# OLED Display Shield



For din rail enclosure kits

## Control Elements:



- ① OLED display
- ② socket for OLED
- ③ socket for connection cable
- ④ beeper
- ⑤ buttons
- ⑥ leds